

VEHICLE IDENTIFICATION

The Vehicle Identification Number is stamped on a plate located on the left side of the instrument panel, on the Motor Vehicle Safety Certification Plate located on the rear face of the left front pillar post (Figure 1) and on the Identification Number Plate located on the left side of the front cowl under the hood (Figure 2).

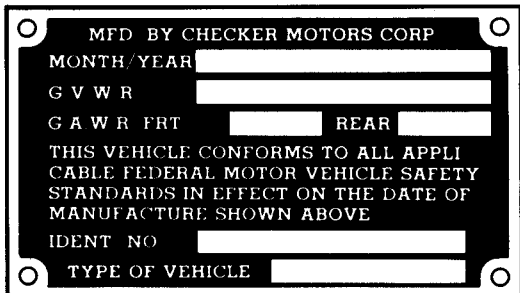


FIGURE 1—Motor Vehicle Safety Certification Plate

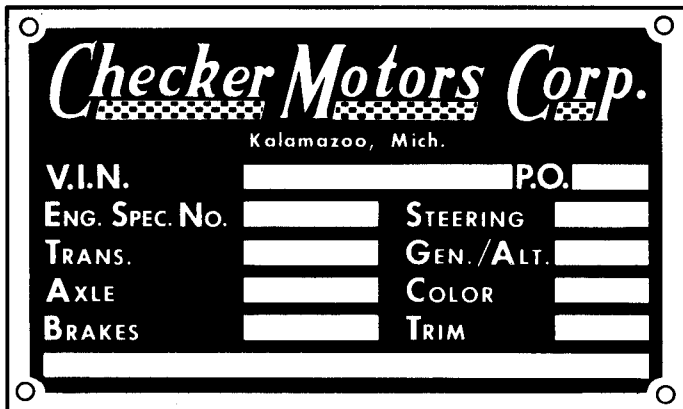


FIGURE 2—Identification Number Plate

The Identification Number Plate (Figure 2) also has identification numbers for the following components:

- | | |
|-----------------|-------------------|
| 1. Engine | 5. Steering |
| 2. Transmission | 6. Generator |
| 3. Rear Axle | 7. Interior Color |
| 4. Brakes | 8. Interior Trim |

The number at the very bottom of the Identification Number Plate is the exterior paint number.

Example: Dupont 12345

VEHICLE IDENTIFICATION NUMBER

The following example is a break down of the Vehicle Identification Number to aid in servicing and/or ordering parts.

**EXAMPLE SERIAL NUMBER
(A11-2244-89242A)**

A11.....Model ID.
 2244.....Production Order No.
 89242.....Serial No.
 A.....Engine ID.

MODEL IDENTIFICATION

A11.....Taxicab-120" W.B.
 A11E.....Taxicab-129" W.B.
 A12.....Marathon-120" W.B.
 A12E.....Marathon-129" W.B.

ENGINE IDENTIFICATION

No Suffix250 6 Cyl. - Fed. - W/O A/C
 F.....250 6 Cyl. - Fed. - W/ A/C
 E.....250 6 Cyl. - Calif. - W/ or W/O A/C
 A.....305 8 Cyl. - Fed. - W/ or W/O A/C
 C.....350 8 Cyl. - Calif. - W/ or W/O A/C

GROUP O – GENERAL INFORMATION (CONT'D.)

VEHICLE COMPONENT IDENTIFICATION NUMBER LOCATION

COMPONENT	TYPE	LOCATION
Engine	6 Cylinder 8 Cylinder	Stamped on pad at right-hand side of cylinder block at rear of distributor. Stamped on pad immediately forward of the right-hand cylinder head.
Transmission	Turbo Hydra-Matic 400	Tag on right-hand side of transmission case.
Rear Axle	Dana Model 44	Stamped on right axle tube, in middle.
Generator	Delco-Remy	Stamped on top of drive end frame.
Starter	Delco-Remy	Stamped on outer case, toward rear.
Battery	Delco Freedom Willard	On cell cover segment, top of battery. On vertical side of battery.

KEYS AND LOCKS

Four keys are provided with each vehicle except when equipped with a deck lid "T" handle. With a deck lid "T" handle, six keys are provided. The square-head key operates the ignition switch only. The oval-head key operates all other locks except the deck lid "T" handle, if equipped; the two brass colored keys operate the deck lid "T" handle.

LUBRICATION AND MAINTENANCE

An Owner's Manual is provided with each vehicle at delivery.

Lubrication charts and maintenance information is provided in the Owner's Manual and should be followed to assure good vehicle performance.

LIFTING THE VEHICLE

CAUTION

When jacking or lifting vehicles from the frame side rails, be certain lift pads do not contact the catalytic converter or the body rocker panel as damage will result.